

Mezzanine Inspection Report

REVISION 3

Date: 03/11/2015	Station Name: Farragut West – C03	Mezzanine #: 038	Completed By: Mike Butler
-------------------------	--	-------------------------	----------------------------------

Summary

Video scoping and pull string installation completed for communication ducts for the faregate arrays. Video scoping completed for power ducts for the faregate arrays as well. Video scoping was partially completed in the power run from the kiosk to the AFC panel due to access issues at 90-degree bends which do not have an associated handhole. There are a total of 2 90-degree bends between the kiosk and AFC panel. During scoping PLNT masons opened the mezzanine floor at the first 90-degree bend coming from the kiosk. The duct was exposed, but there was no handhole. Pull string was not installed in the power run from the kiosk to AFC panel. AFC panel is located in Cleaners and Water Service Room 201.

Scanning was completed at this mezzanine. A proposed duct is recommended to run from the southeast face of the kiosk and continue parallel to the existing ducts, hugging as close to the wall as possible. Handholes are proposed at the bend locations. The duct will transition from duct to overhead conduit at the third handhole, adjacent to the existing recycle bins. The proposed conduit will run vertically up the side wall to the core drill location where it will pass through the wall into Room 201. Once inside Room 201, the conduit will run along the inside wall towards the AFC Panel.

Refer to photos and drawings for further information.

Photos and drawings are for reference purposes only; see new schematic drawing/proposed pathway on last page.

Scoping of Faregate Array(s)

Task	Yes/No	Notes
Communications Duct - Upper Faregate Array (8 gates)		
Was video scoping completed for the entire duct run?	Yes	Refer to WMATA Farragut West 3inch Upper Comm Faregate.avi file.
Were pull strings installed at all faregates in the array?	Yes	
Were there any obstructions or blockages? Provide details of type and specific location.	No	
Is the duct at capacity? Provide additional details about the dimensions of ducts and number of wires.	No	3" duct less than 15 wires
Communications Duct - Lower Faregate Array (3 gates)		
Was video scoping completed for the entire duct run?	Yes	Refer to WMATA Farragut West 3inch Lower Comm Faregate.avi & WMATA Farragut West 6inch Lower Comm Faregate.avi files.
Were pull strings installed at all faregates in the array?	Yes	
Were there any obstructions or blockages? Provide details of type and specific location.	No	
Is the duct at capacity? Provide additional details about the dimensions of ducts and number of wires.	No	3" duct less than 15 wires
Power Duct - Upper Faregate Array (8 gates)		
Was video scoping completed for the entire duct run?	Yes	Refer to WMATA Farragut West 6inch Upper Power Faregate.avi file.
Were there any obstructions or blockages? Provide details of type and specific location.	No	
Is the duct at capacity? Provide additional details about the dimensions of ducts and number of wires.	No	6" duct less than 15 wires
Power Duct - Lower Faregate Array (3 gates)		
Was video scoping completed for the entire duct run?	Yes	Refer to WMATA Farragut West 6inch Lower Power Faregate.avi & WMATA Farragut West 3inch Lower Power Faregate.avi files.
Were there any obstructions or blockages? Provide details of type and specific location.	No	
Is the duct at capacity? Provide additional details about the dimensions of ducts and number of wires.	No	6" duct less than 15 wires


Scoping of Power Duct - Kiosk to AFC Panel		
Task	Yes/No	Notes
Kiosk to 90-degree bend (Distance: 50')		
Was video scoping completed for the entire duct / conduit run?	No	Refer to WMATA Farragut West (East) 6inch Left Power Feed.avi & WMATA Farragut West (East) 6inch Right Power Feed files.
Was pull string installed?	No	
Were there any obstructions or blockages? Provide details of type and specific location.	Yes	No handhole access to complete scoping and pull string installation
Is the duct / conduit at capacity? Provide additional details about the dimensions of duct / conduit and number of wires.	No	6" duct less than 15 wires
90-degree bend to 90-degree bend (Distance: 32')		
Was video scoping completed for the entire duct / conduit run?	No	
Was pull string installed?	No	
Were there any obstructions or blockages? Provide details of type and specific location.	Yes	No handhole access to complete scoping and pull string installation
Is the duct / conduit at capacity? Provide additional details about the dimensions of duct / conduit and number of wires.	N/A	
90-degree bend to AFC Panel (Distance: 10')		
Was video scoping completed for the entire duct / conduit run?	No	
Was pull string installed?	No	
Were there any obstructions or blockages? Provide details of type and specific location.	Yes	No handhole access to complete scoping and pull string installation
Is the duct / conduit at capacity? Provide additional details about the dimensions of duct / conduit and number of wires.	N/A	
Observations / Issues / Next Steps		
<p>Total length of existing power run from Kiosk to AFC Panel is approximately 92'.</p> <p>Proposed power run from Kiosk to AFC Panel is 115', including 70' of proposed duct and 45' of proposed conduit.</p>		
Sign Off		
	GFP Representative	WMATA PRGM
Name:	Mike Butler	
Signature:		
Date:	07/01/2015	

Photo #1: Existing and Proposed Duct from Kiosk

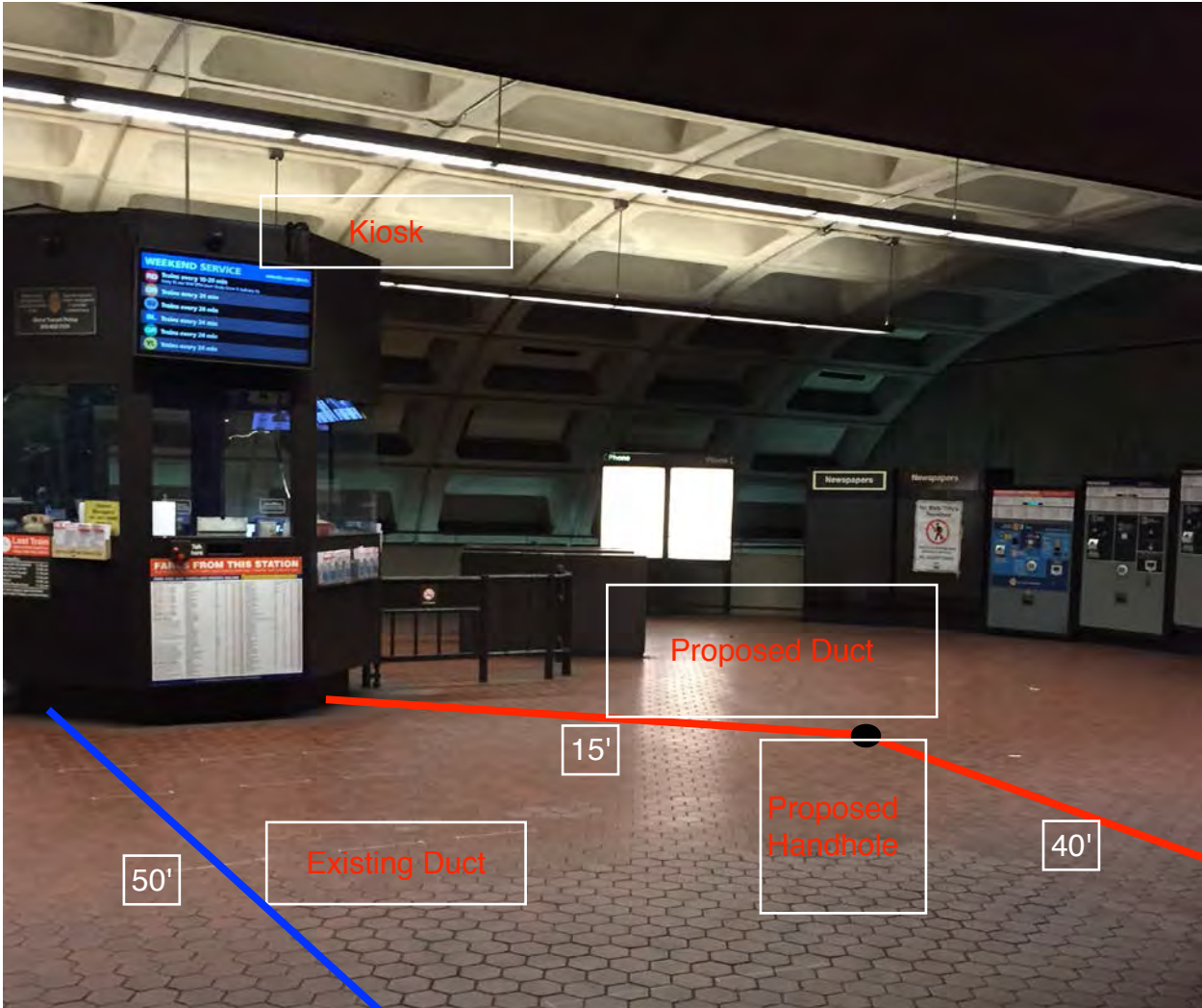


Photo #2: Existing and Proposed Duct/Conduit on mezzanine floor

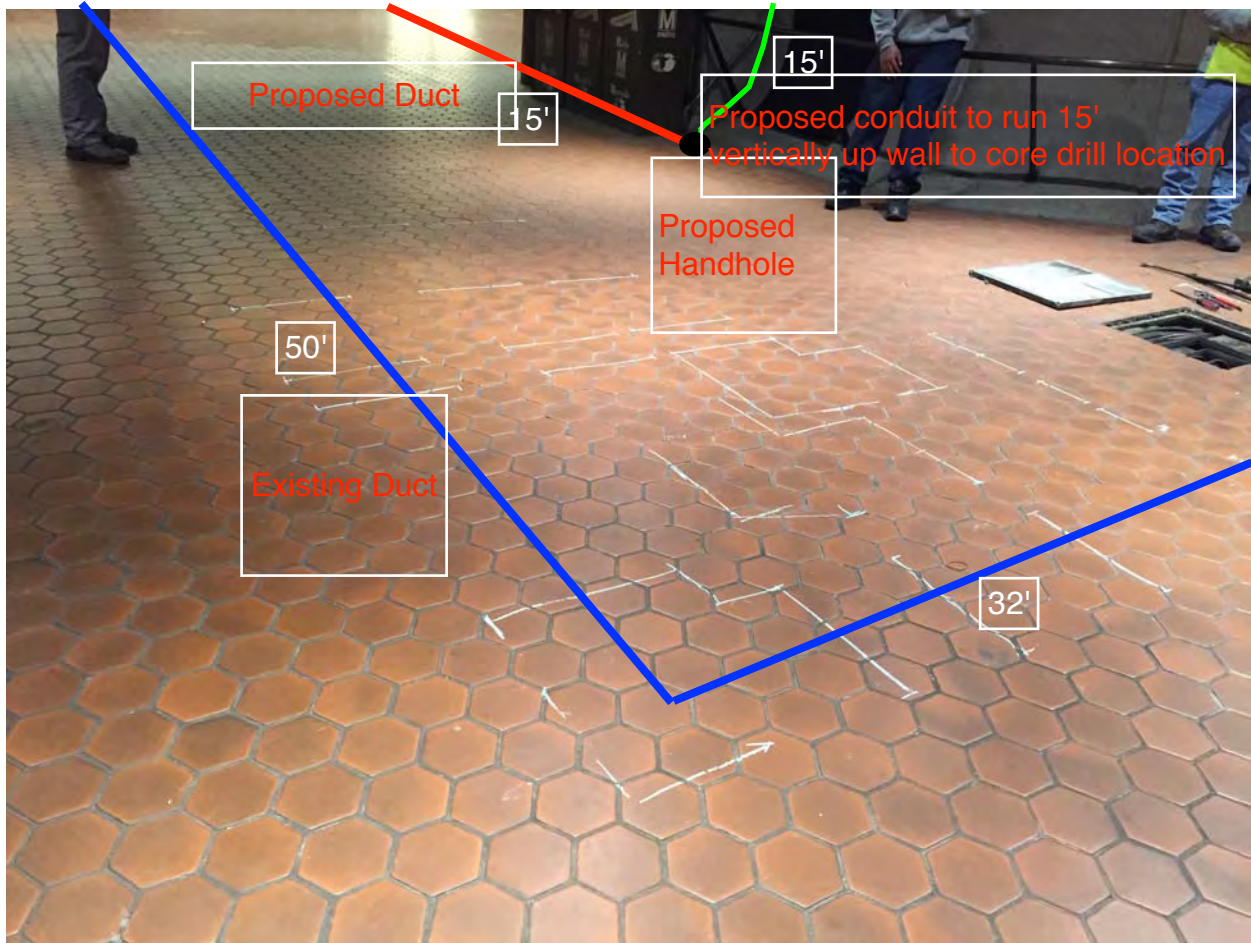


Photo #3: Existing duct on mezzanine floor

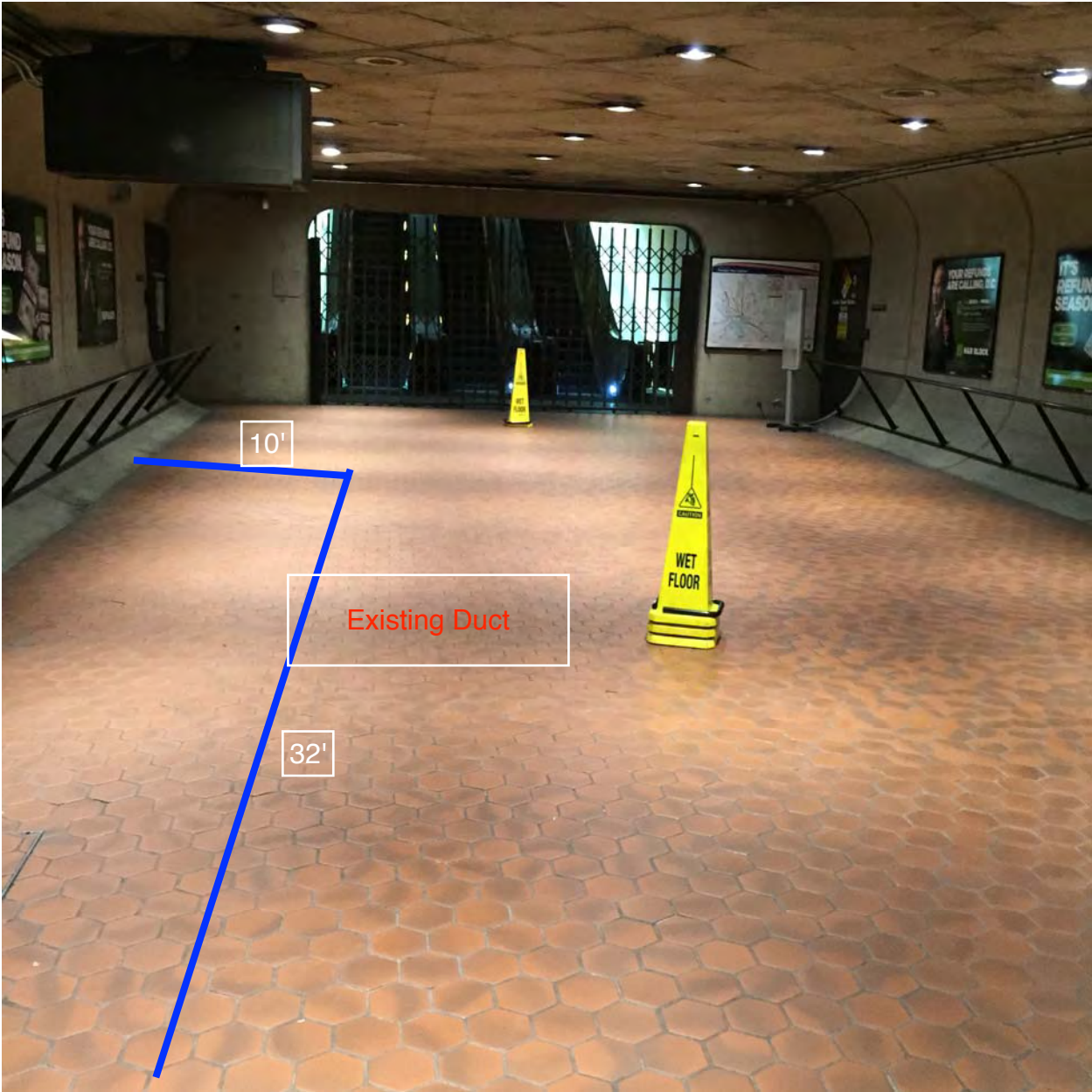


Photo #4: Proposed Conduit from core drill location feeding AFC panel SEMA in room 201

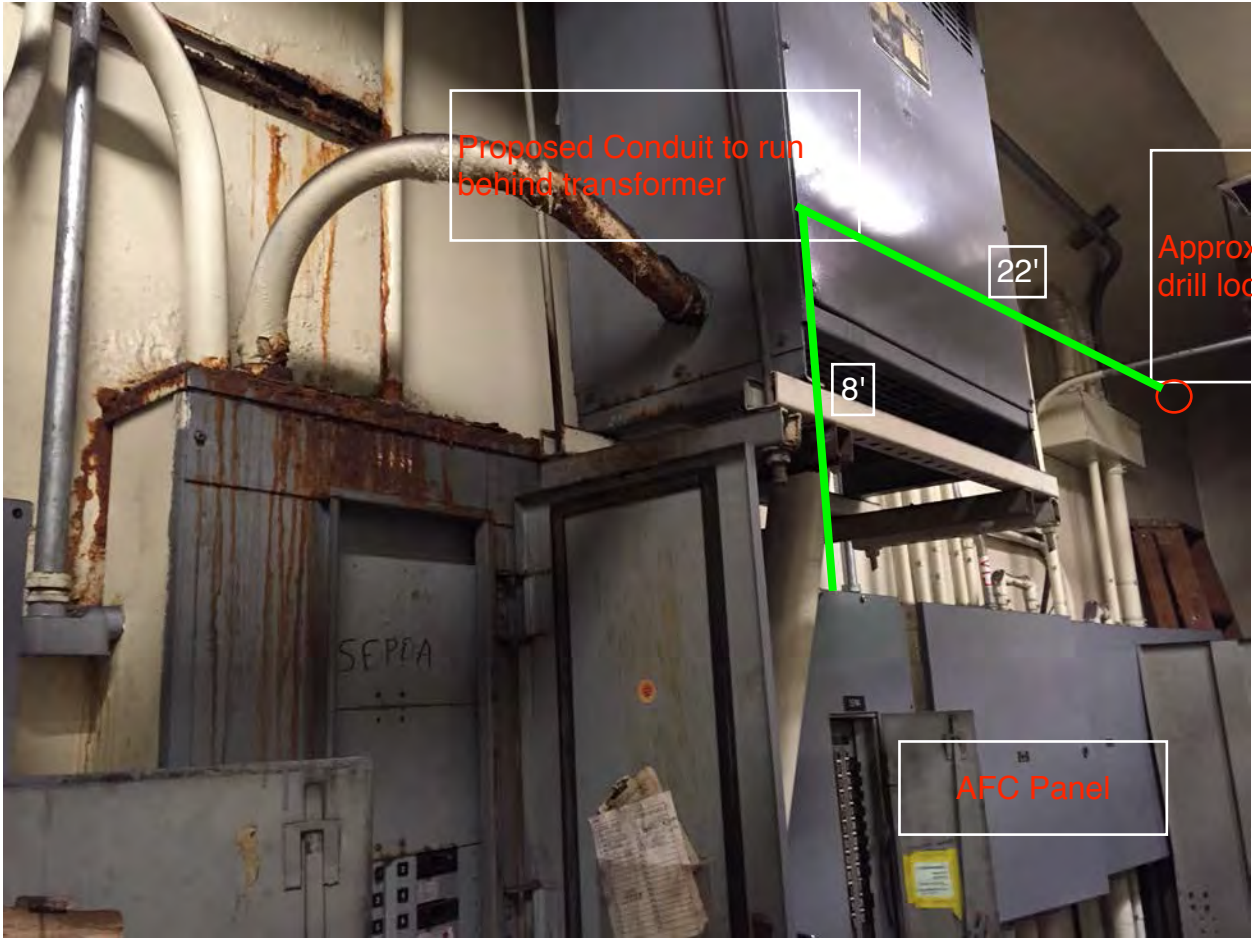


Photo #5: Existing Duct and Proposed Conduit feeding AFC panel SEMA in room 201



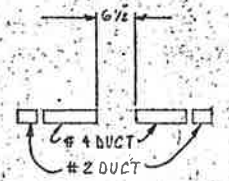
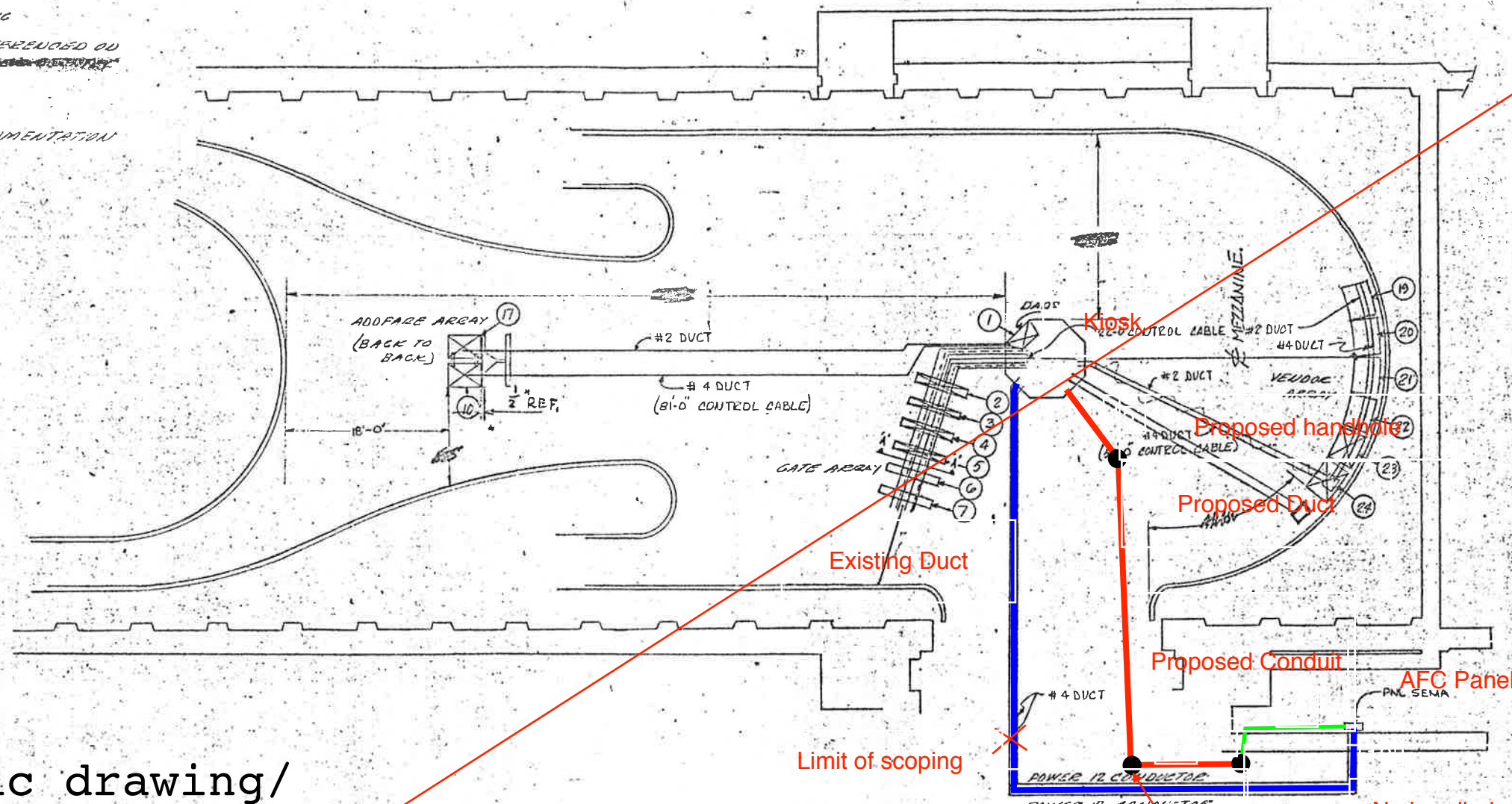
REVISIONS		
DESCRIPTION	DATE	APVD

INFORMATION CONCERNING DUCTS AND CONDUITS IS
 INFORMATION SUPPLIED TO CUBIC WESTERN DATA
 THIS DRAWING IS THE PROPERTY OF CUBIC WESTERN DATA
 IT IS TO BE USED ONLY FOR THE PROJECT AND NOT TO BE REPRODUCED OR
 COPIED IN ANY MANNER WITHOUT THE WRITTEN PERMISSION OF CUBIC WESTERN DATA

MACHINE INVENTORY IS DEPICTED ON THIS DRAWING
 MINIMUM OPERATIONAL MACHINE INVENTORY IS REFERENCED ON
 DRAWING BY THE X DRAWN THEN THE MACHINE INVENTORY

BUILT CONDITIONS SEE SHEET 2.

REFERENCE DRAWING USED SEE SUPPORT DOCUMENTATION
 FOR THIS MEZZANINE.



VIEW 'A-A'

New DWG 1-B

See new schematic drawing/
 proposed pathway on last
 page

- 2 INSTALLATION PLAN

WASHINGTON METROPOLITAN
 AREA TRANSIT AUTHORITY

APPROVED AS CORRECTED
 (REVISIONS REQUIRED)
 Approval does Not Relieve the Contractor
 of the Responsibility for the Accuracy of
 this Document or for Full Compliance
 with the Contract Requirements.

BY: *Patrick's Print*
 For Contract Officer
 DATE: *12-27-16*

REFERENCE DRAWINGS USED

WATA - 926-071A-105-3-0
 WATA - 926-071A-105-3-0
 GWD - REF - 071A-105-3-0
 CWD - REF - 071A-105-3-0

CP-926071A-105-3-0

CONTRACT NUMBER: 926-071A-105-3-0

CUBIC WESTERN DATA

FARRAGUT WEST STATION
 EAST MEZZANINE
 AFC MACHINES

DESIGNER: []
 CHECKED: []
 DRAWN: []
 DESIGN ACTIVITY APPROVAL: []
 APPROVED: []

DRAWING NUMBER: 926-071A-105-3-0

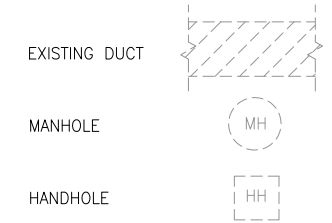
SHEET: 38

43030

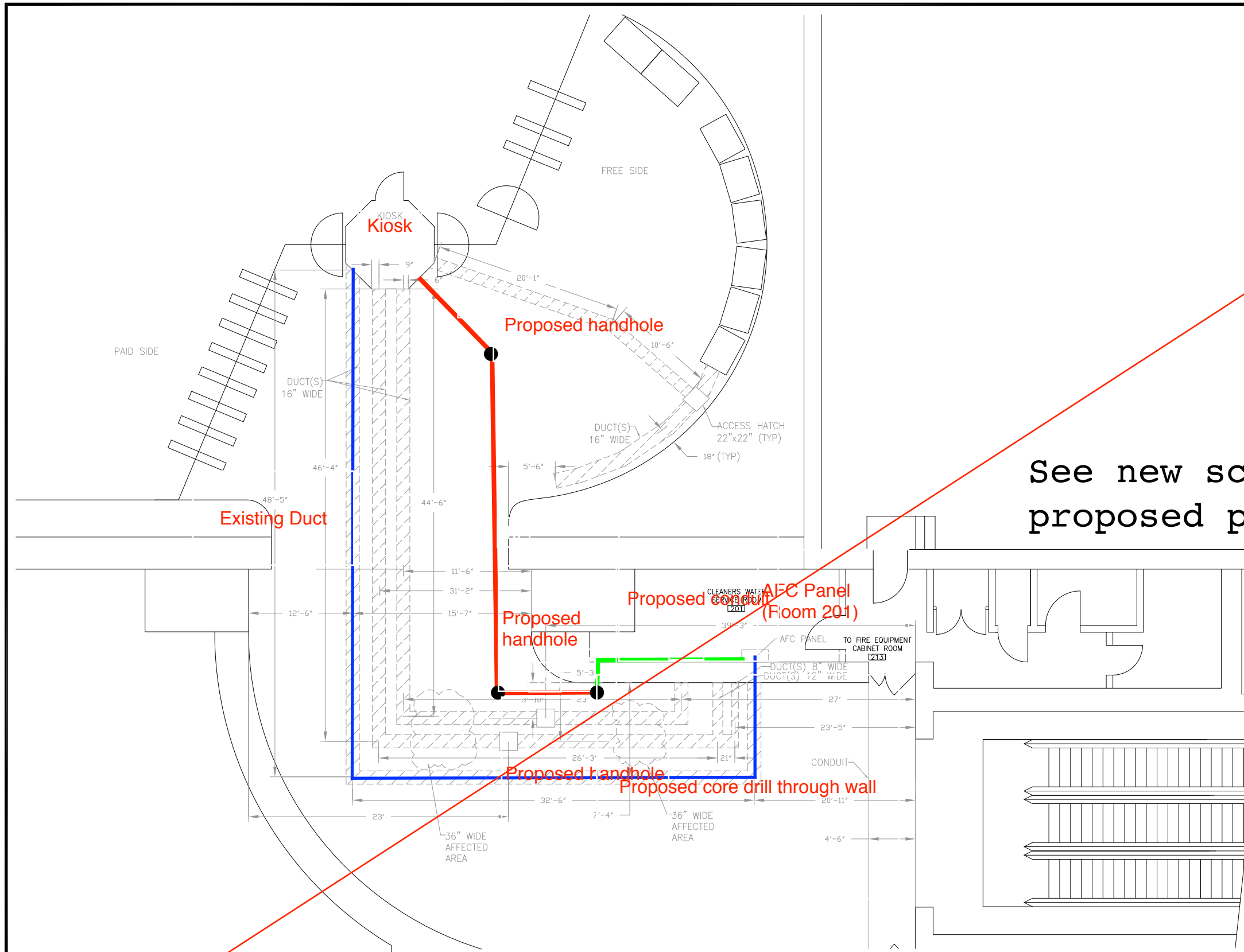
PLAN NOTES:

1. DIMENSIONS ARE IN FEET AND INCHES.
2. DIMENSIONS ARE FOR REFERENCE ONLY.
3. EXISTING IN-FLOOR DUCTS/CONDUITS WERE IDENTIFIED USING A PORTABLE GPR SCANNING DEVICE.
4. THE SCANNING COVERAGE IS LIMITED TO THE MEZZANINE FLOOR ONLY.
5. GPR SCANNING HAS THE FOLLOWING LIMITATIONS: (i) 12 INCHES VISIBLE SCANNING DEPTH; (ii) VISIBILITY BEYOND CONGESTED OR NEAR SURFACE REINFORCEMENT LAYERS; (iii) DETECTION OF PVC AND OTHER NON-METALLIC OBJECTS (iv) DETERMINATION OF SIZE AND EXTENTS OF SUBSURFACE ANOMALIES SUCH AS SLAB VOIDS OR REBAR SIZES; AND (v) VISIBILITY WHEN VARIABLE MOISTURE CONDITIONS EXIST IN THE SUBSTRATE.

LEGEND:



See new schematic drawing/
proposed pathway on last page



FARRAGUT WEST STATION
SCALE: NOT TO SCALE

CONTRACT NO.
XXXXXX

DESIGNED	DATE	REFERENCE DRAWINGS		REVISIONS		
		NUMBER	DESCRIPTION	DATE	BY	DESCRIPTION
C. LOOSE	03-15					

WASHINGTON METROPOLITAN AREA TRANSIT AUTHORITY
DEPARTMENT OF TRANSIT INFRASTRUCTURE AND ENGINEERING SERVICES
OFFICE OF INFRASTRUCTURE RENEWAL PROGRAM

GFP A Gannett Fleming/Parsons JOINT VENTURE

APPROVED _____ SUBMITTED _____
PROJECT MANAGER

15-NEPP-01
IN - FLOOR DUCT INSPECTIONS
C03 Farragut West
PROPOSED POWER RUN

SCALE: NOT TO SCALE

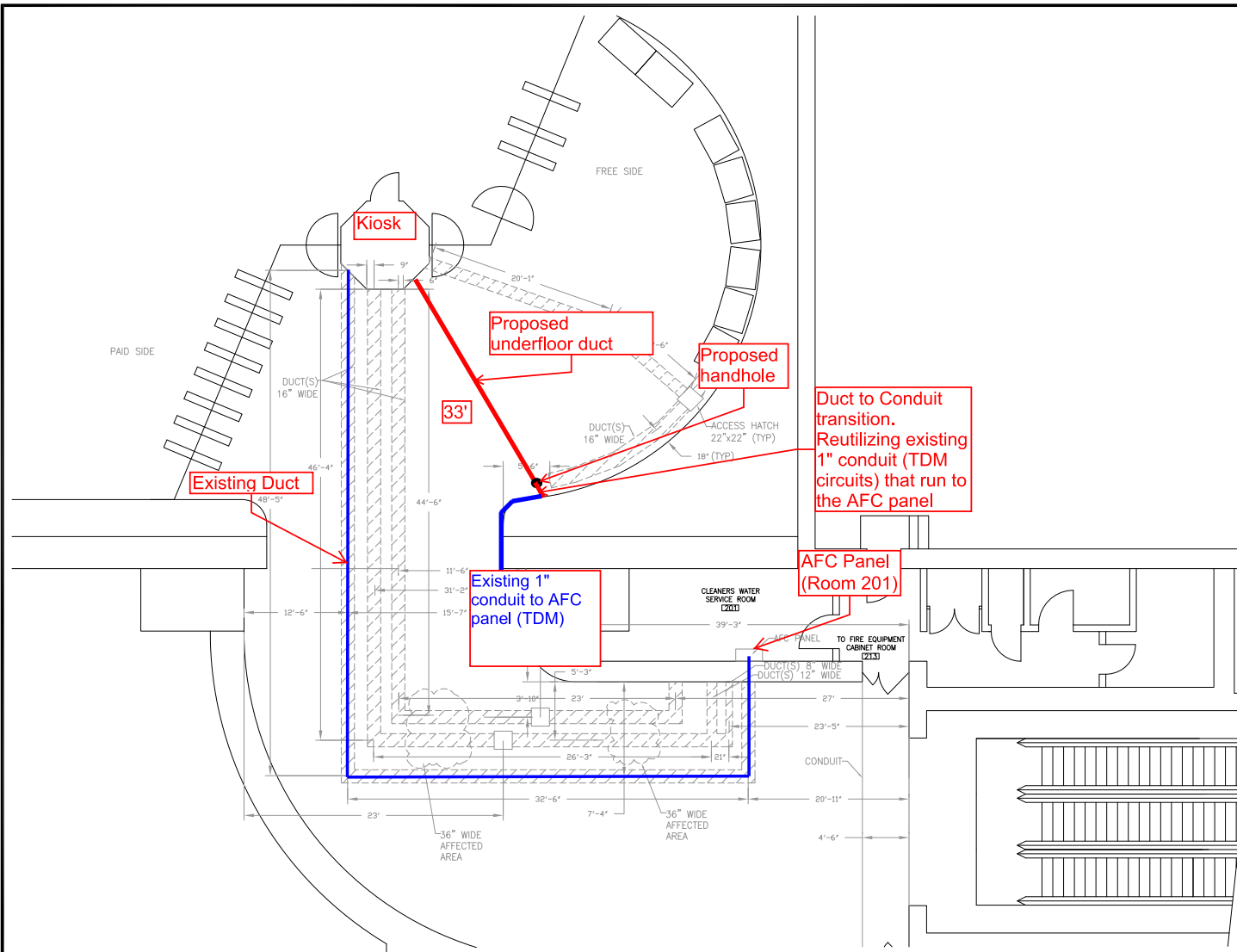
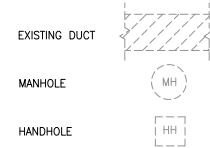
DRAWING NO.
C03-E-100

XXX

PLAN NOTES:

1. DIMENSIONS ARE IN FEET AND INCHES.
2. DIMENSIONS ARE FOR REFERENCE ONLY.
3. EXISTING IN-FLOOR DUCTS/CONDUITS WERE IDENTIFIED USING A PORTABLE GPR SCANNING DEVICE.
4. THE SCANNING COVERAGE IS LIMITED TO THE MEZZANINE FLOOR ONLY.
5. GPR SCANNING HAS THE FOLLOWING LIMITATIONS: (i) 12 INCHES VISIBLE SCANNING DEPTH; (ii) VISIBILITY BEYOND CONGESTED OR NEAR SURFACE REINFORCEMENT LAYERS; (iii) DETECTION OF PVC AND OTHER NON-METALLIC OBJECTS (iv) DETERMINATION OF SIZE AND EXTENTS OF SUBSURFACE ANOMALIES SUCH AS SLAB VOIDS OR REBAR SIZES; AND (v) VISIBILITY WHEN VARIABLE MOISTURE CONDITIONS EXIST IN THE SUBSTRATE.

LEGEND:



FARRAGUT WEST STATION
SCALE: NOT TO SCALE

CONTRACT NO. XXXXXX

DESIGNED	C. LOOSE	03-15	REFERENCE DRAWINGS		REVISIONS	
			NUMBER	DESCRIPTION	DATE	BY
DRAWN	C. LOOSE	03-15				
CHECKED	M. BUTLER	03-15				
APPROVED						

WASHINGTON METROPOLITAN AREA TRANSIT AUTHORITY
DEPARTMENT OF TRANSIT INFRASTRUCTURE AND ENGINEERING SERVICES
OFFICE OF INFRASTRUCTURE RENEWAL PROGRAM

GFP JOINT VENTURE
A SHAWWEL FIRMING PARTNERS

APPROVED _____ SUBMITTED _____ PROJECT MANAGER _____

15-NEPP-01
IN - FLOOR DUCT INSPECTIONS
C03 Farragut West
PROPOSED POWER RUN

SCALE: NOT TO SCALE

DRAWING NO. C03-E-100

XXX